

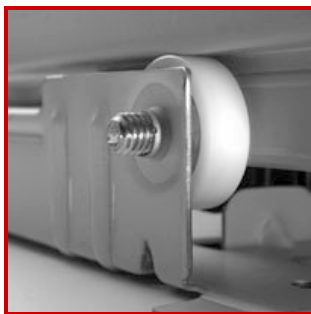
DOSMAR

DS-20XX

DS-2SXX



DS-20XX Standard Duty Cash Drawers Series



Cost-effective solution for light to medium traffic environment with usual using of cash drawer. Drawer moving is provided with nylon roller wheels.

DS-2SXX Heavy Duty Cash Drawers Series



Reliable solution for high traffic environment, including constant use or periods of extremely heavy use. Drawer moving is supported with durable steel ball bearing slides.

Main Features

- Universal design, all steel construction
- Reliable solenoid (24V/1A or 0,7A), lockable mechanism and runners/slides
- Durable coat: light grey or black
- 3-positions key lock (locked, electrical open, manual open)
- Stainless steel or coated front panel with cheque slot (right alignment of lock) or without slot (central alignment of lock)
- Two-part adjustable money insert for 4 or 5 notes with removable coin tray for 5 or 9 coins

Model Classification:

DS-2 0¹ 9² 4³-MS⁴-NB⁵-NS⁶

where:

1. Drawer type
0: Nylon roller wheels
S: Steel ball bearing slides
2. Number of coins
9 or **5**
3. Number of bills
4 or **5**
4. Microswitch option
MS: Microswitch equipped
None: No microswitch
5. Mechanical bell
NB: No bell
None: With bell
6. Slot for cheque
NS: No slot
None: With slot

Dimensions:

417(W) x 417(L) x 100(H) mm

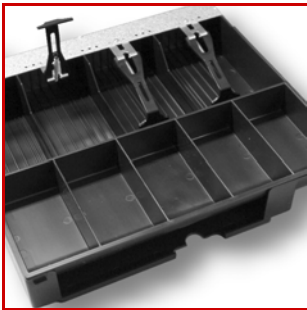
Height with rubber feet 114 mm

Options

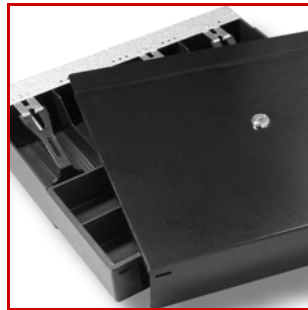
- 12V/1,5A or 1A solenoid
- 2-positions key lock
- Microswitch
- Mechanical bell
- Custom color
- Various connectors

Accessories

- Extra money tray inserts
- Lockable lids
- Mounting brackets



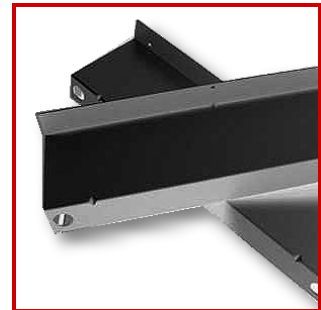
Two-part adjustable money insert for 4 or 5 notes with removable coin tray for 5 or 9 coins



Lockable steel lid covering money insert is available optionally for transferring cash from POS to office.



Various colors and textures of powder coating and customers logo at front are available by request



Brackets pair for mounting cash drawer under desk, saving counter space solution.