

Impact Dot Matrix Printers

A standard among the expanding variety of printers, dot impact printers remain the top choice for a variety of applications. Their special strength in high-speed, plain-paper printing makes dot impact printers essential for check and validation applications, among others. Because CITIZEN brings all its precision machinery expertise to bear in the development of dot impact printers, it is perfectly positioned to meet every customer need.



CD-S500S
(Standard type)



CD-S501S
(With auto cutter type)
Available in Black



CD-S503S
(With auto cutter/winder type)



Vertical solution

CD-S500/501/503



- 5.0 lines/sec high-speed printing
- 76.2 / 69.5 / 57.5mm selectable paper width
- Easy paper loading
- Logic-seeking control
- Optional interface cards
- Built-in AC adapter
- Black mark function (option)
- Cash drawer kick-out
- Memory switch function
- Build-in buzzer
- Bitmap data registration (NV memory)
- ESC/POS compatibility
- Page mode
- Two color printing
- 3 PLY paper printing capability
- Easy customization by software
- Availability in white or black
- High reliability and durability
- Driver: WinXP/2003, OPOS 1.8, CUPS

Applications

- Receipt
- Journal
- Ticket
- Daily report
- Kitchen
- Delivery

Auto cutter

ACS-532

Type Classification

CD-S500 S RS E WH M1

1) 2) 3) 4) 5) 6)

1) Model type

CD-S500: Standard type
CD-S501: Built-in auto cutter type
CD-S503: Built-in auto cutter and winder type

2) Power source type

S: Built-in AC adapter type

3) Interface

PA: Parallel (IEEE1284)
RS: Serial (RS-232C)
UB: USB

Easy paper loading



Just drop paper in and close the top cover.

Accessories



Wall mount kit



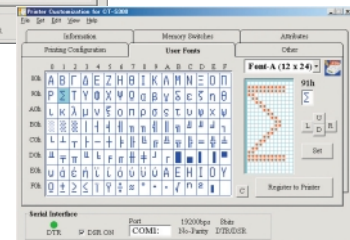
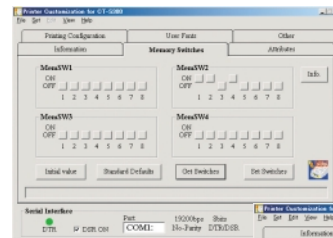
WALL-CTS300

- Ink ribbon cartridge: IR-31B (Black)
- Ink ribbon cartridge: IR-31RB (Red/Black)

Interface cards

Parallel
(950035-00)Serial
(950034-00)USB
(950036-01)Ethernet
(950052-00)

Customization software



Specifications

Printing method	Serial dot impact (Logic-seeking control)
Printing direction	Bi-directional
Font	Font A: 7 × 9, 9 × 9 matrix
Number of columns	76.2mm paper : Font A-40/42 columns / Font B-33/35 columns 69.5mm paper : Font A-36/30 columns / Font B-38/31 columns (69.5mm paper width) 57.5mm paper : Font A-30/25 columns / Font B-31/26 columns (57.5mm paper width)
Printing speed	5.0 lines/sec at 76.2mm width+40 columns 5.4 lines/sec at 69.5mm width+36 columns 6.0 lines/sec at 57.5mm width+30 columns
Character size (W × H)	Font A: 1.25 × 3.12mm (7 × 9 dots), Font B: 1.57 × 3.12mm (9 × 9 dots)
Character set	Alphanumeric, International, Code page 437,850,860,863,865,852,866,857,858, WPC1252
Line spacing	4.23mm
Line feed speed	40 lines/sec
Paper feed method	Friction
Paper	76.2/69.5/57.5±0.5mm × ø83mm Thickness:0.06-0.085mm (1 Ply) 1Ply/2Ply/3Ply copy paper 0.05 - 0.14mm (Copy paper cut) 0.05 - 0.20mm (Copy paper print)
Interface	Parallel (IEEE1284), Serial (RS-232C), USB
Input buffer	4K/40 bytes
NV bit map data area	128K bytes
Drawer kick-out	2 drawers
Ink ribbon cartridge	Two colors (Red and Black), Single color (Black)
Power supply	DC24V±7%
AC adapter	Input:AC 100-230V,1.3A Output:DC24V±5%
Weight	Approx.2.8kg (Standard type) 3.2kg (With auto cutter/winder type)
Dimensions (W × D × H)	156 × 247.7 × 174.4mm (Standard type / with auto cutter) 156 × 277.7 × 197.8mm (Winder type)
Operating environment	0 - 50°C, 10 - 90% RH
Storage environment	-20 - 70°C, 5 - 90% RH
Reliability	Printer:MCBF 7.5 million lines Print Head:150 million characters Auto cutter:1,000,000 cuts
EMC and Safety standards	UL, C-UL, FCC classA, TUV-GS, CE marking, CCC

4) Region(Characters + power cord)

E: Europe
U: USA

5) Case Color

WH: Cool white
BK: Black

6) Black mark sensor

None: No sensor
M1: Left sensor for paper back
M2: Right sensor for paper back
M3: Left sensor for paper front
M4: Right sensor for paper front